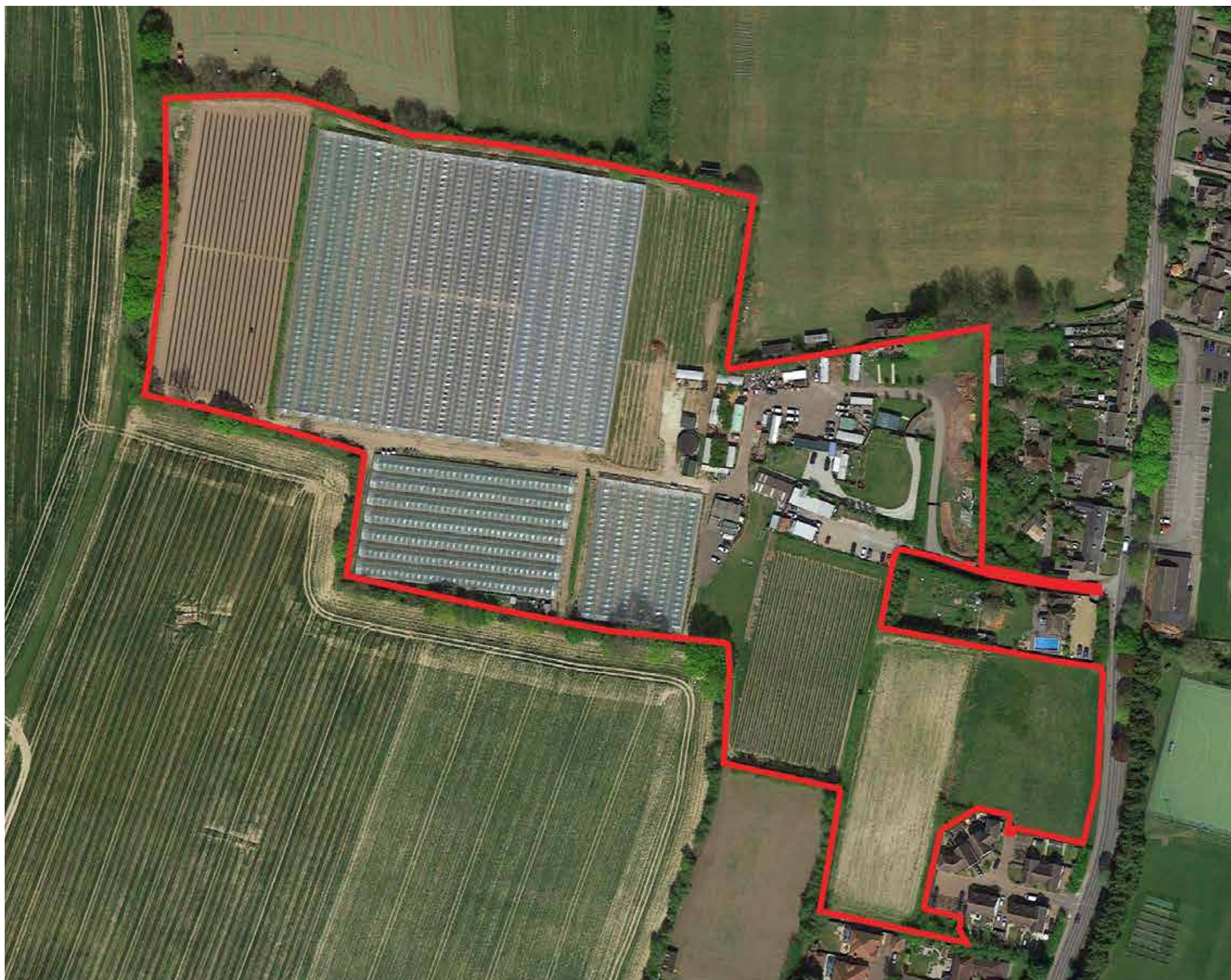




Proposed Development at Haven Farm, Sutton Valence

Public Consultation
Thursday 7th April 2022 16:30-19:30

Location: Sutton Valence Village Hall, North Street, Sutton Valence



Fernham Homes welcome you to attend a public consultation to see and hear about the development proposed for land at Haven Farm, Sutton Valence.

The development will provide a new Doctors Surgery and retail facility together with new homes (including 40% affordable housing).

The proposal will also include a woodland area and a new pedestrian crossing on North Street.

